



integrated vehicle tracking & scheduling

Advanced telematics

Key Benefits

- Significantly reduced travel & fuel costs
- Real-time fleet visibility
- 'Greener' operations
- Improved productivity
- Superior client service
- Enhanced transparency
- Health & Safety / Duty of Care compliance
- Automated reporting
- Minimised vehicle misuse

More than simply GPS vehicle tracking, the integrated Causeway Telematics and Resource Scheduling solution delivers an unparalleled list of benefits for field-based operations.

For any business with a field-based operation, the challenges of operational control, employee management and work planning will be well-recognised. Thankfully, technology now offers a solution.

Causeway integrated Telematics and Resource Scheduling provides you with an unprecedented level of live operational visibility and performance data. Working seamlessly in tandem, the two applications help you improve the efficiency of your resource planning by providing a 'one-screen' real-time view of everything you need to manage your team more effectively, including operative identity and location, live job status and scheduled workload.

There are additional benefits, which combine to deliver immediate returns on your investment including reduced fuel wastage, greater transparency and eliminated out-of-hours misuse - the cost-justification is self-evident.

The broader advantages extend further still, with client service improvements and carbon footprint reductions helping to make your operation more attractive to potential clients. As vehicle tracking becomes increasingly common, your offering needs something extra to set it apart from the competition and

this integrated solution can provide it in the shape of superior reporting and exceptional productivity.

Today, many service providers are under pressure to monitor their field operations more closely, not only to maximise performance for clients but as a legal duty of care. Recent legislation, including lone worker regulations and the Corporate Manslaughter and Corporate Homicide Act 2007, obligates employers to take the necessary steps to mitigate risk. The Causeway solution provides exceptional real-time 'visibility' and optional driver performance data (CANbus) which demonstrates your commitment to employee and public safety, as well as compliance with legal obligations.

Delivering a fast return on investment, Causeway Telematics & Resource Scheduling is a vital tool for any field-based operation.

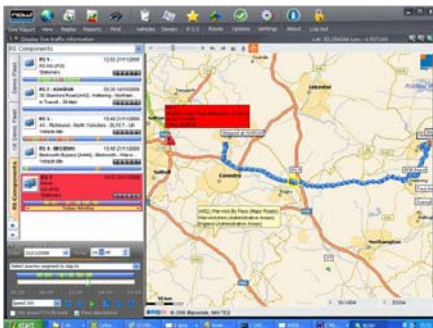


Clear, on-screen mapping of real-time driver locations and job status allows for simple one-click job allocation.



The integrated software provides access to comprehensive monitoring, enabling you to view real-time data and then allocate work to the best-located and first-available operative at the click of a mouse. The job is then sent automatically to the operative's mobile device (most often a PDA) and loaded into the Engineer's Diary program where related job information is posted as it is returned from the field.

Graphical displays of accurate, secure and real-time data for unprecedented control and monitoring of on-the-road staff.



Pre-set flags can highlight when operatives exceed speed limits, cross a territory boundary or return home early. In conjunction with e-Timesheets functionality, automatic reports can check journey histories against

on and off-site timesheet information provided by engineers. These exception reports highlight anomalies, encouraging engineer honesty and providing reassurance for payroll processing.

In-depth reporting of activity and vehicle use revolutionise field management.

Detailed reporting facilities provide valuable records of vehicle movements and analysis of business vs. private mileage to help eliminate out-of-hours vehicle misuse. Reports can be exported into .xls, .csv, .pdf or other formats, as required. Automating these previously time-consuming activities frees office-based staff to use their time on other work and with performance levels in the field improving at the same time, it all adds up to greater efficiency and, in turn, improved profit margins.

Eng	Name	Date	Journey Start	Start Location	Vicon Mile	End Time	Location	Miles	Business	Private
	Mike Hall	04/48	RIS HQ pt	05:56	Newton St 13	07:48	RIS HQ pt	44	01:15	0
		06:16	Newton St	07:48	RIS HQ pt	08:34	RIS HQ pt	0	01:32	0
		08:34	RIS HQ pt	08:38	RIS HQ pt	09:05	RIS HQ pt	0	02:04	0
		09:05	RIS HQ pt	09:05	RIS HQ pt	09:13	RIS HQ pt	0	02:09	0
		09:13	RIS HQ pt	10:22	Wokingham	10:45	Wokingham	45	01:09	0
		10:45	Wokingham	12:01	RIS HQ pt	12:15	RIS HQ pt	44	01:15	0
		12:15	RIS HQ pt	15:16	RIS HQ pt	15:23	RIS HQ pt	06	02:23	0
		15:23	RIS HQ pt	15:34	RIS HQ pt	15:38	RIS HQ pt	0	03:01	0
		15:38	RIS HQ pt	15:47	RIS HQ pt	16:11	RIS HQ pt	0	03:11	0
		15:56	RIS HQ pt	16:00	RIS HQ pt	16:04	RIS HQ pt	0	03:04	0
		16:46	Vehicle Use							
		16:50	RIS HQ pt	17:08	RIS HQ pt	17:18	RIS HQ pt	0:00:18	0	0
		17:11	RIS HQ pt	18:40	Wokingham	19:37	Wokingham	34:01:37	34	0
		19:05	Wokingham	19:09	Newton St 13	19:04	Newton St 13	0:00:04	0	0
		19:23	Newton St	19:28	Wokingham	20:05	Wokingham	0:00:05	0	0
		20:24	Wokingham	21:08	Katting	20:44	Katting	33:00:44	33	0
		21:16	Katting	21:42	RIS HQ pt	21:35	RIS HQ pt	10:00:35	10	0
						18:43		129:40:44	77	67:58

CANbus

CANbus is state-of-the-art technology, providing an interface to the engine management system of your fleet vehicles. Data extracted from the vehicles is viewed within the system, providing vital information on driver performance (eg consistently fierce acceleration or braking), fuel efficiency and emissions.

Highlight Features

- Real-time GPS location from the field
- Integrated one-click scheduling
- Map view inc. job status and workload
- Auto-Timesheet checking
- Business and Private mileage report comparison
- Pre-set alert pop-ups e.g. speeding
- Engine Management System data
- Anti-theft immobilisation

To find out how Causeway can help *your* business please call us today on **01628 552000**



CAUSEWAY
the construction software people

Causeway Technologies Ltd

Comino House, Furlong Road, Bourne End,
Buckinghamshire SL8 5AQ

t: +44 (0)1628 552000 f: +44 (0)1628 552001

e: marketing@causeway.com

www.causeway.com